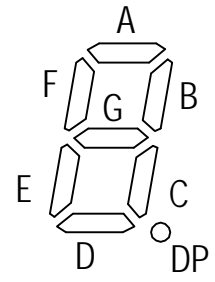
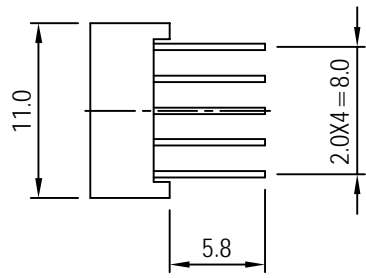
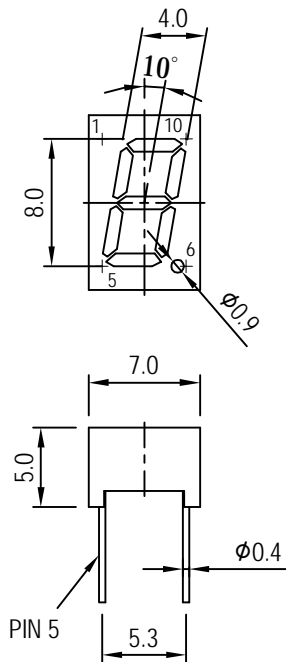


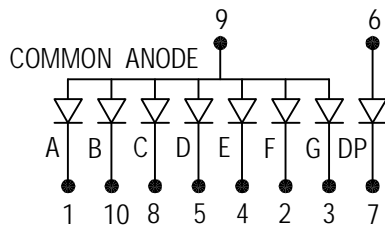
# JOINSCAN LEDs

S.31A 0.31 INCH (8mm) SINGLE DIGIT PIN PITCH 2.0mm 11 X 7 X 5mm

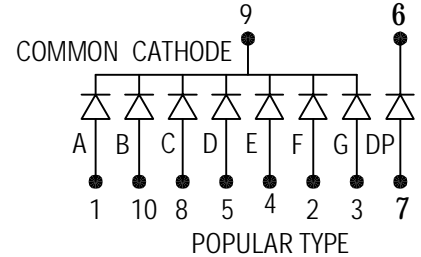


UNIT : mm  
TOLERANCE : ±0.2mm

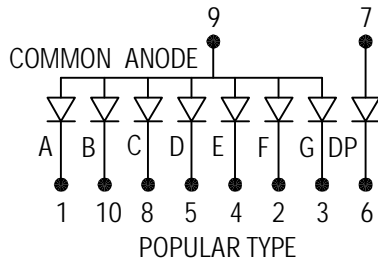
## A. A2816 SERIES



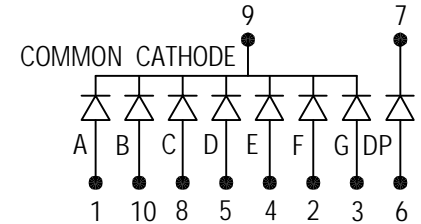
## B. C2816 SERIES



## C. A2818 SERIES



## D. C2818 SERIES



PIN FUNCTION	COMMON ANODE			COMMON CATHODE			WAVE LENGTH (nm)	IR MAX (uA) VR=5V	VF (V) IF=20mA	LUMINOUS INTENSITY IF=20mA
	A	C	E	B	D	F				
Emitting COLOR	model no.	model no.	model no.	model no.	model no.	model no.				
GaP RED	A2816H	A2818H		C2816H	C2818H		695	100	2.2	0.6mcd
GaAsP ORANGE RED	A2816O	A2818O		C2816O	C2818O		630	100	2.0	2.5mcd
GaP GREEN	A2816G	A2818G		C2816G	C2818G		570	100	2.2	3.5mcd
Gap Yellow	A2816Y	A2818Y		C2816Y	C2818Y		600	100	2.2	2.5mcd
GaAlAs SUPER RED	A2816RS	A2818RS		C2816RS	C2818RS		650	100	1.8	3.0mcd
GaAlAs ULTRA RED										
GaAlAs YELLOW GREEN										
Sic BLUE	A2816SF	A2818SF		C2816SF	C2818SF		465±5	100	3.6	5.0mcd
ZnSe WHITE										

Model No. -BW BLACK SURFACE WHITE SEGMENT  
-BR BLACK SURFACE RED SEGMENT  
-GW GRAY SURFACE WHITE SEGMENT

Remark :

1. Typical forward current 10-20mA, MAXimum forward current 25mA
2. Solder Temperature 1.6mm Below Seating plane less 5 seconds at 260°C +5°C -30°C
3. Peak Forward current Per Dice, Duty cycle 1/10, 10KHZ, MAXimum 120mA
4. Operating Temperature From -25°C to 85°C
5. RoHS COMPLIANT

REV : C