

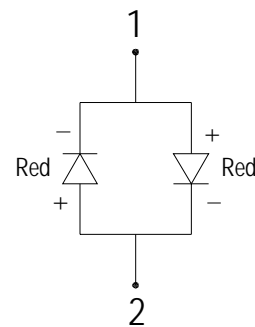
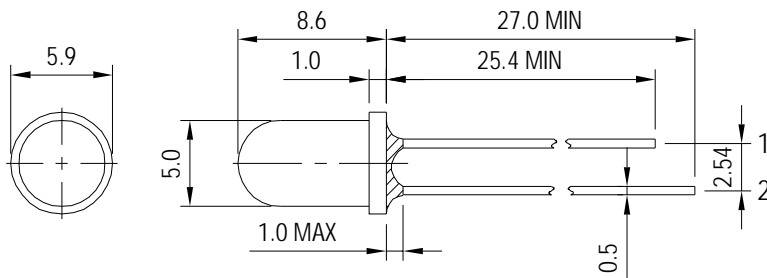
# JOINSCAN LEDs

| Ø 5.0 mm BICOLOR CLEAR TYPE LED LAMP |                 |
|--------------------------------------|-----------------|
| MODEL NO.                            | L507SC          |
| EMITTING COLOR                       | RED / RED       |
| DICE                                 | GaAlAs / GaAlAs |
| LENS                                 | CLEAR TYPE      |

| ABSOLUTE MAXIMUM RATINGS ( 最大極限值 )  |        |                 |        |
|---|--------|-----------------|--------|
| TA = 25°C   |        |                 |        |
| PARAMETER   | SYMBOL | RATING          | UNIT   |
| RED POWER DISSIPATION   | P AD   | 54.0            | mW     |
| RED POWER DISSIPATION   | P AD   | 54.0            | mW     |
| DERATING LINEAR FROM 25°C   |        | 0.27            | m / °C |
| RED CONTINUOUS FORWARD CURRENT  | I AF   | 30.0            | mA     |
| RED CONTINUOUS FORWARD CURRENT  | I AF   | 30.0            | mA     |
| PEAK FORWARD CURRENT ( DUTY CYCLE 1 / 10 , 10KHZ )  | I PF   | 90.0            | mA     |
| REVERSE VOLTAGE   | V R    | 5.0             | V      |
| OPERATING TEMPERATURE   | T OPR  | -25°C TO + 85°C |        |
| STORAGE TEMPERATURE   | T STG  | -25°C TO + 85°C |        |
| SOLDER TEMPERATURE 1/16 INCH BELOW SEATING PLANE FOR 5 SECONDS AT 230 °C OR 3 SECONDS AT 250 °C |        |                 |        |

| RED ELECTRO - OPTICAL CHARACTERISTICS ( 電性 ) |             |           |     |     |     |         |
|--|-------------|-----------|-----|-----|-----|---------|
| TA = 25°C                                    |             |           |     |     |     |         |
| PARAMETER                                    | SYMBOL      | CONDITION | MIN | TYP | MAX | UNIT    |
| FORWARD VOLTAGE                              | V F         | IF = 20mA | —   | 1.8 | —   | V       |
| LUMINOUS INTENSITY                           | I V         | IF = 20mA | —   | 150 | —   | mcd     |
| PEAK EMISSION WAVELENTH                      | $\lambda$ P | IF = 20mA | —   | 660 | —   | nm      |
| REVERSE CURRENT                              | I R         | VR = 5V   | —   | —   | 100 | $\mu$ A |

| RED ELECTRO - OPTICAL CHARACTERISTICS ( 電性 ) |             |           |     |     |     |         |
|--|-------------|-----------|-----|-----|-----|---------|
| TA = 25°C                                    |             |           |     |     |     |         |
| PARAMETER                                    | SYMBOL      | CONDITION | MIN | TYP | MAX | UNIT    |
| FORWARD VOLTAGE                              | V F         | IF = 20mA | —   | 1.8 | —   | V       |
| LUMINOUS INTENSITY                           | I V         | IF = 20mA | —   | 150 | —   | mcd     |
| PEAK EMISSION WAVELENTH                      | $\lambda$ P | IF = 20mA | —   | 660 | —   | nm      |
| REVERSE CURRENT                              | I R         | VR = 5V   | —   | —   | 100 | $\mu$ A |



UNIT : mm  
TOLERANCE :  $\pm 0.2$ mm  
REV : B